

26/2

Q  
58/4

214-980

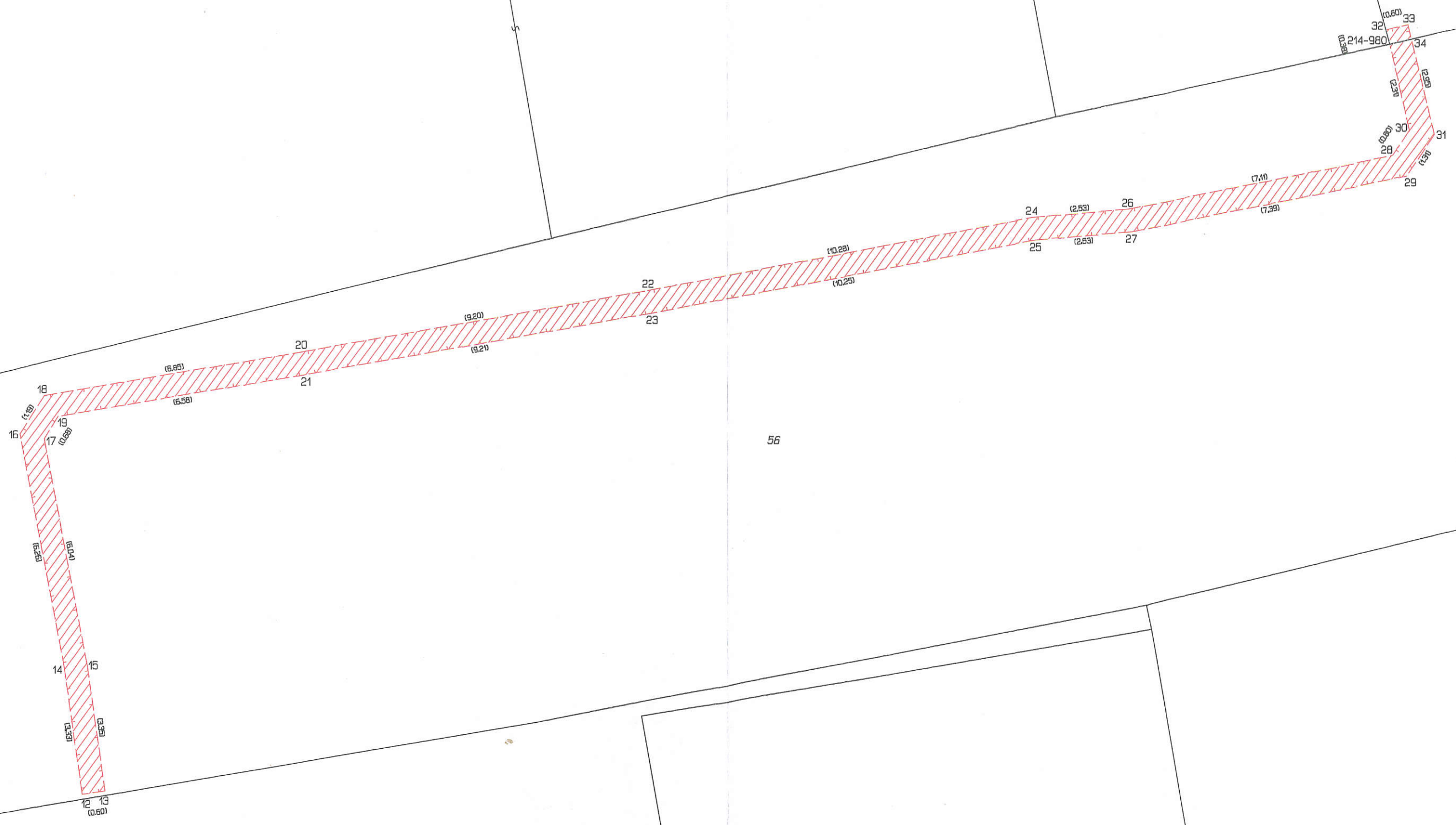
56

26/7

Q  
57/9

1282

Q  
1283



12 (0,50)

13 (0,50)

14 (2,3)

15 (5,3)

16 (5,19)

17 (0,28)

18 (5,19)

19 (0,28)

20 (6,85)

21 (6,58)

22 (9,20)

23 (9,21)

24 (10,28)

25 (10,25)

26 (2,53)

27 (2,53)

28 (7,10)

29 (7,33)

30 (1,30)

31 (1,30)

32 (0,80)

33 (0,80)

34 (0,80)